

A decorative network diagram in the top right corner, consisting of various sized grey circles connected by thin grey lines, some solid and some dashed, creating a complex web-like structure.

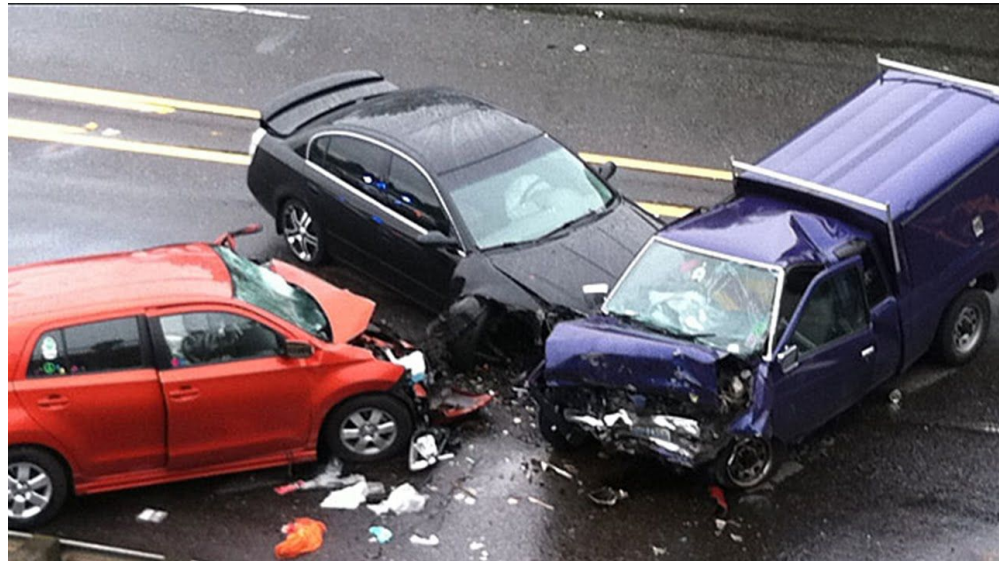
# THE LEADING CAUSE OF DEATH FOR TEENS

By Stephan Baum-Harvey

A decorative network diagram in the bottom left corner, similar to the one in the top right, featuring grey circles of different sizes connected by thin grey lines, some solid and some dashed.

## The leading cause of death for teens

The top leading cause of death for teens is:  
Car Accidents - 41% of teen deaths are caused  
by this.



## Car Accidents



Teenage years is the time where you start to learn to drive. Though learning to drive will open up way more risks to yourself. In the United States the leading cause of teen traffic accidents is texting and driving. The second leading cause is speeding. If you text and drive you have a 23% increase of crashing your car.



**Now time for some tips!**

## What can I do to avoid a accident



There is a few things you can do to improve your chances of surviving a car accident. Some include:

Wearing a seatbelt at all times.

Remain under the speed limit.

Keep a 4 second gap between you and the car in front of you.

## More Tips



You can also make sure that your airbags are working correctly. This can be the difference between life and death in a car crash.

To insure that you are aware of what you can do to stay safe while driving, pick a good drivers education program that teaches you the safest way to drive in your state.

## How to buy a safe car



If you wish to stay safe in a car crash you want to make sure you have a safe car that has the necessary safety measures that will keep you alive.

You should have seat belts, airbags, and you also want to make sure all your blinkers, windshield wipers and more are working correctly.

**And Finally...**

**DO NOT TEXT AND DRIVE!**

**Arrive Alive**



**Don't Text  
& Drive**



A decorative background featuring a network diagram of nodes and connections. The nodes are represented by circles of varying sizes and colors (blue, grey, white), connected by thin lines. The diagram is positioned in the corners of the slide, with a larger concentration in the top-left and bottom-right areas.

**Thanks!**